




TOUCH OF COLOR
FLOORING

FAMILY
& PET
FRIENDLY
CHOICES

TOP BRANDS AND STYLES OF CARPET

www.touchofcolorflooring.com

INTRODUCTION

Carpet is one of the most overlooked parts of our day to day lives, yet when it is run down, frayed, or coarse, it can be not only an eyesore, but a nuisance as well.

Technology has helped the carpet industry make 'leaps and bounds' to create products with increased softness, durability, and the ability to withstand anything that life has to throw at it.

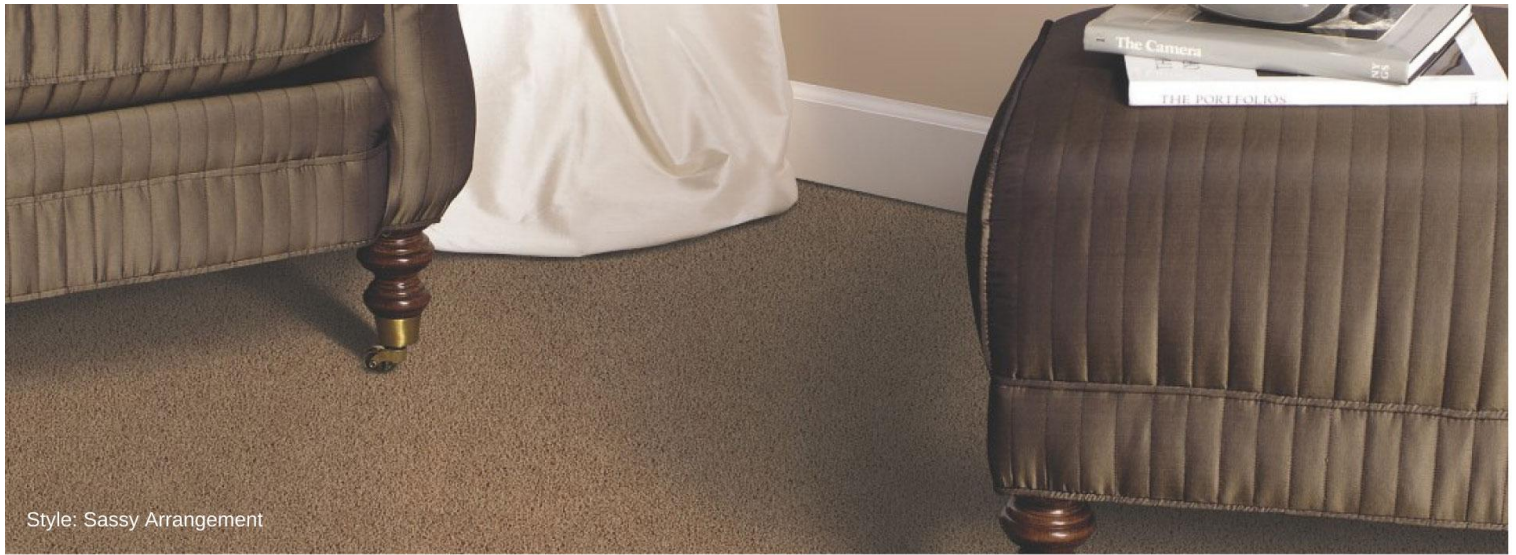
Product's like Shaw's "Life Happens" carpet offer unprecedented guarantees and warranties, as well as protections that have never been previously offered in carpeting.

We have collected some of our most popular brands and showcased them here for you. If you have more questions, reach out to one of our trusted advisors and flooring experts at our retail stores.

If your only experience with carpet is the stuff that has been in your parents house since the 80's, take a visit to one of our showrooms to see how far carpet has come, and how a beautiful piece of carpet can make a house feel like a home.



Photo: Shawfloors.com
Style: Keep Going



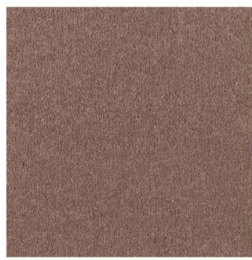

MOHAWK

Mohawk started in the carpet industry back in 1878 and continues to innovate and offer the highest quality products. At Mohawk, they pride themselves on offering eco-friendly flooring, and a brand that is globally recognized as a leader in the industry.



Style: Sassy Arrangement
Color: Cobweb

- SmartStrand Forever Clean Technology
- Perfect for pet owners
- Easy to clean



Style: Westside Estates
Color: Fawn

- EverStrand Technology
- Eco Friendly
- Dirt resistance



Style: Cohesive Blend
Color: Mineral

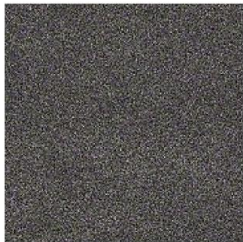
- SmartCushion Technology
- Deep foam construction for comfort
- Reduces noise from foot traffic



Style: Keep Going



At Shaw, their mission statement is 'creating a better future; for our customers, for our people, for our company and for our communities.' Their 'Life Happens' line of products offers amazing waterproof carpet options, and the best warranties in the business.



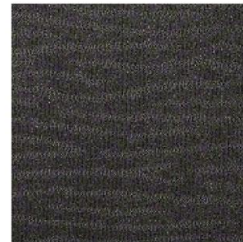
Style: In the Spotlight
Color: Alluring Tonal

- Kid and pet friendly
- 20 available colors
- Lifeguard backing



Style: Luxury at Best
Color: Icelandic

- Over 40 colors to choose from
- Softbac Platinum backing
- Ultra-soft texture



Style: Keep Going
Color: Evening Shadow

- Unique horizontal pattern
- Lifeguard backing
- 20 available colors



Dream Weaver®

Engineered targets residential customers, home builders, architects, property managers and commercial property owners. Their mission is to make the best carpet possible, and with some of the best styles in the industry, they are well on their way to making that happen!



Style: Connections
Color: Raffia

- PureColor fiber technology
- Over 25 colors to choose from
- Fade resistant



Style: Good to Go
Color: Shoreline

- PureColor fiber technology
- Built in soil resistance
- Resistant to high foot traffic



Style: Preseason
Color: 1858

- 5 available colors
- Stain resistant
- Fade resistant



MANNINGTON® Beautiful floors for the real world

Mannington is one of the world's leading manufacturers of fine flooring. They work under four brands: Mannington Residential, Mannington Commercial, Amtico and Burke Brands. If you are looking for a showstopping piece of carpeting for your room, look no further than Mannington.



Style: Circuit
Color: Digital Signal

- ColorSafe Technology (Fade resistant)
- XGuard Stain Resistant Technology
- 12 available colors



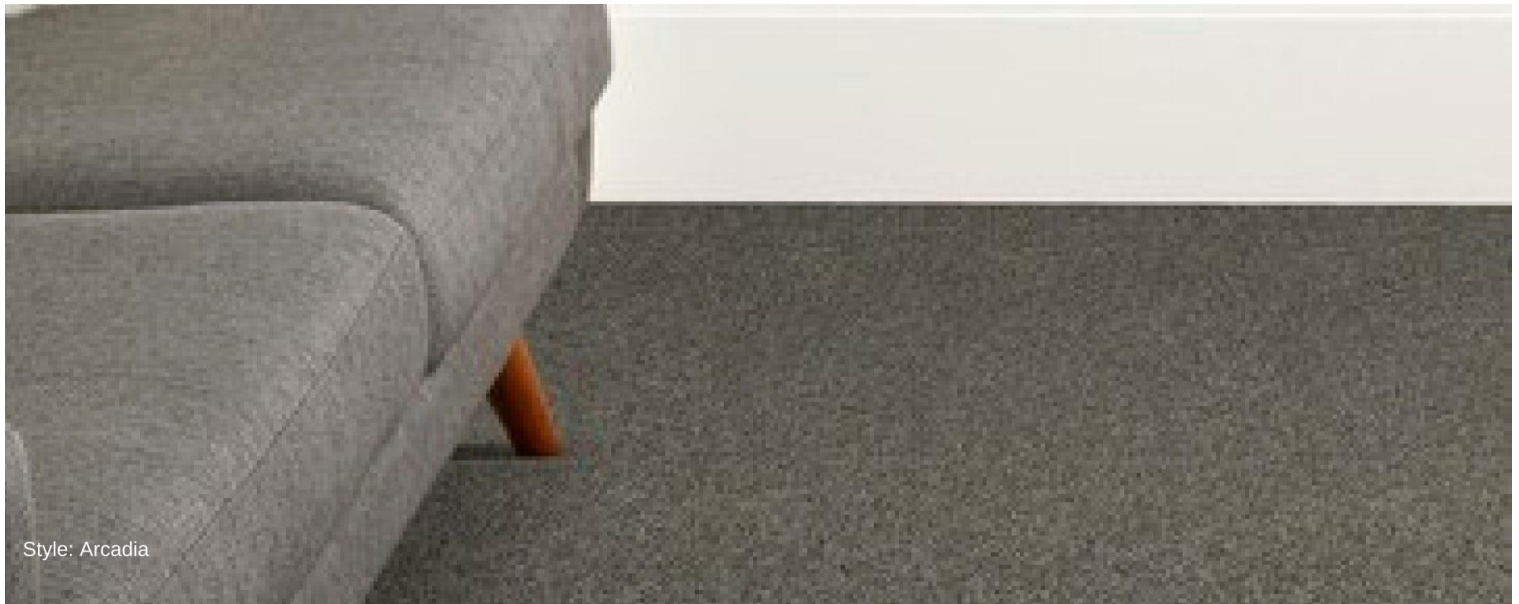
Style: Everywear Plus
Color: Rock-N-Roll

- Flexible and durable
- 10 colors to choose from
- Fade and stain resistant



Style: Sentana
Color: Sandstone

- High tuft bind
- ColorSafe Bleach Resistant Technology
- Resists edge ravel



Style: Arcadia

Tandus | Centiva

A Tarkett Company

Tandus Centiva is a part of the Tarkett company and continues to provide their commercial customers with the ultimate flooring experience with their industry-leading product designs. Unique designs and patterns, help Tandus stand out from the crowd.



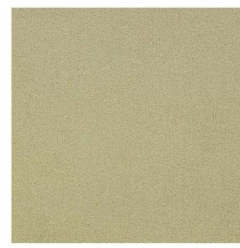
Style: Cache Tweed
Color: Deep Indigo

- Recycled content
- 12 available colors
- Non-woven synthetic fiber backing



Style: Avant
Color: Galvanized Pewter

- Stain resistant
- Non-woven synthetic fiber backing
- No added antimicrobials



Style: Arcadia
Color: Snow Moon

- 13 available colors
- Soil/Stain protection ensured from manufacturer
- Woven polypropylene backing